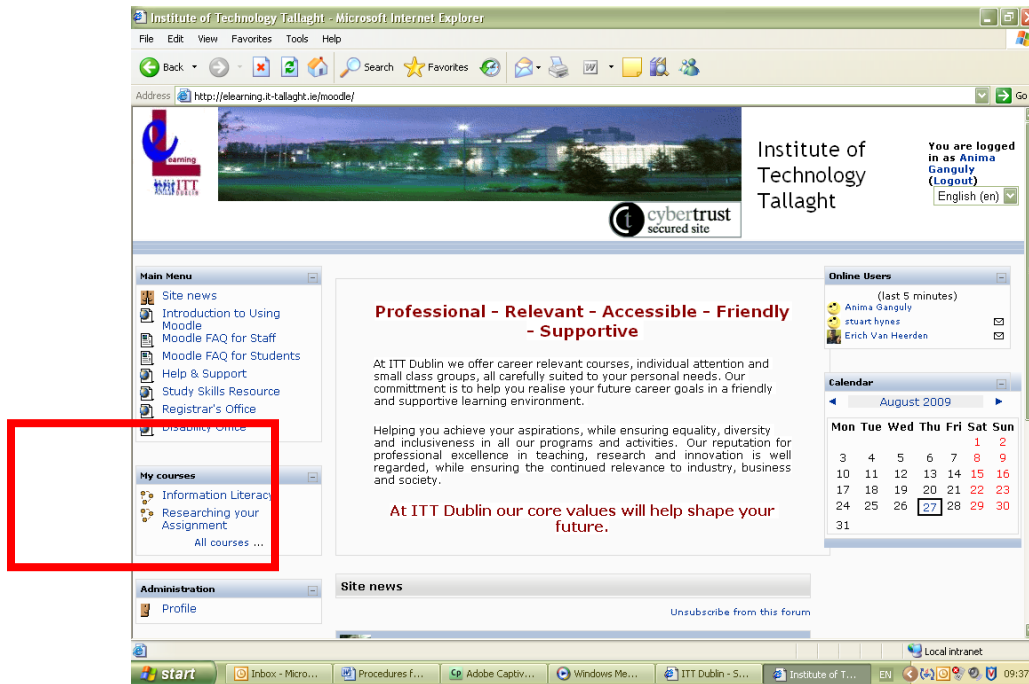
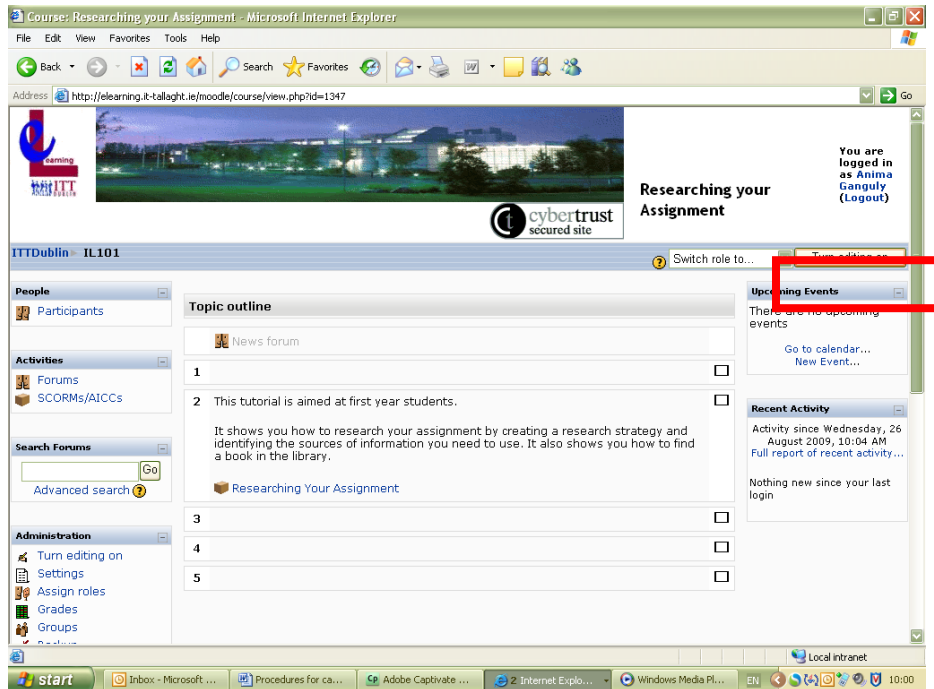


Adding a Scorm Tutorial to Moodle.

1. You will first need the SCORM versions of the tutorials. They are .zip files. Send a request to CeLT or the Library and they will send them along to you.
2. Log in to Moodle and go to the course page where you want to add the tutorial.

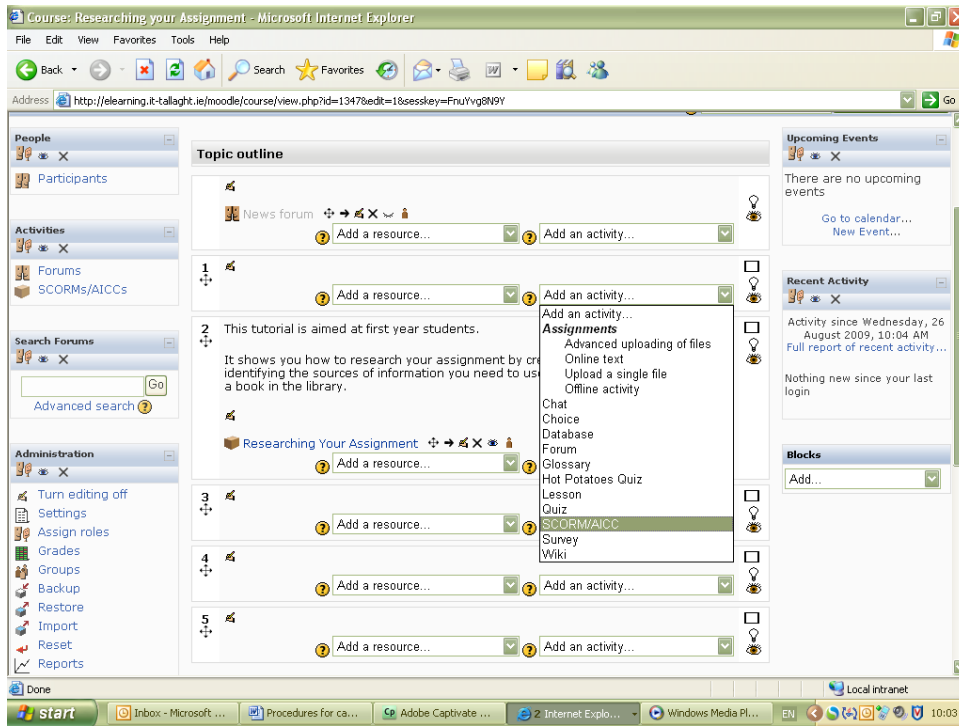


3. When you go to your course page, turn editing on using the button on the top right corner of the course page.

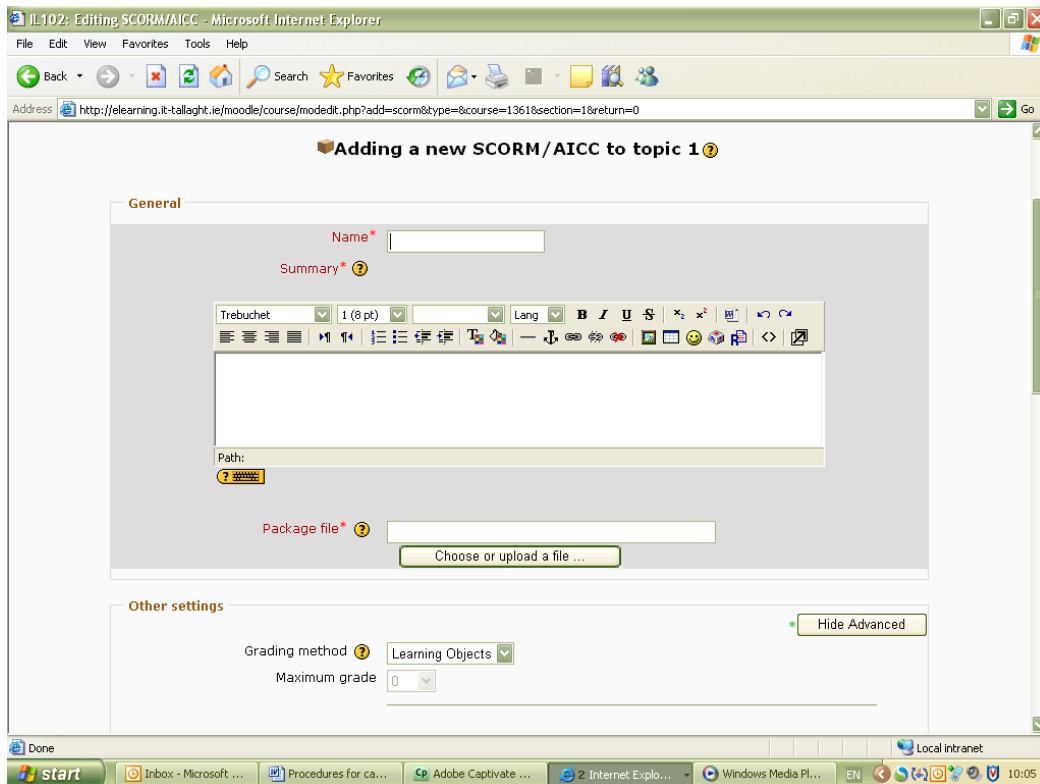


Note that you must have 'editing teacher' permissions on the course page in order to be able to upload the tutorial. If you cannot see the 'Turn editing on' button' this means that you don't have 'editing teacher' permissions. For more information, contact Margaret Phelan on ext. 2343 or email celt@ittdublin.ie.

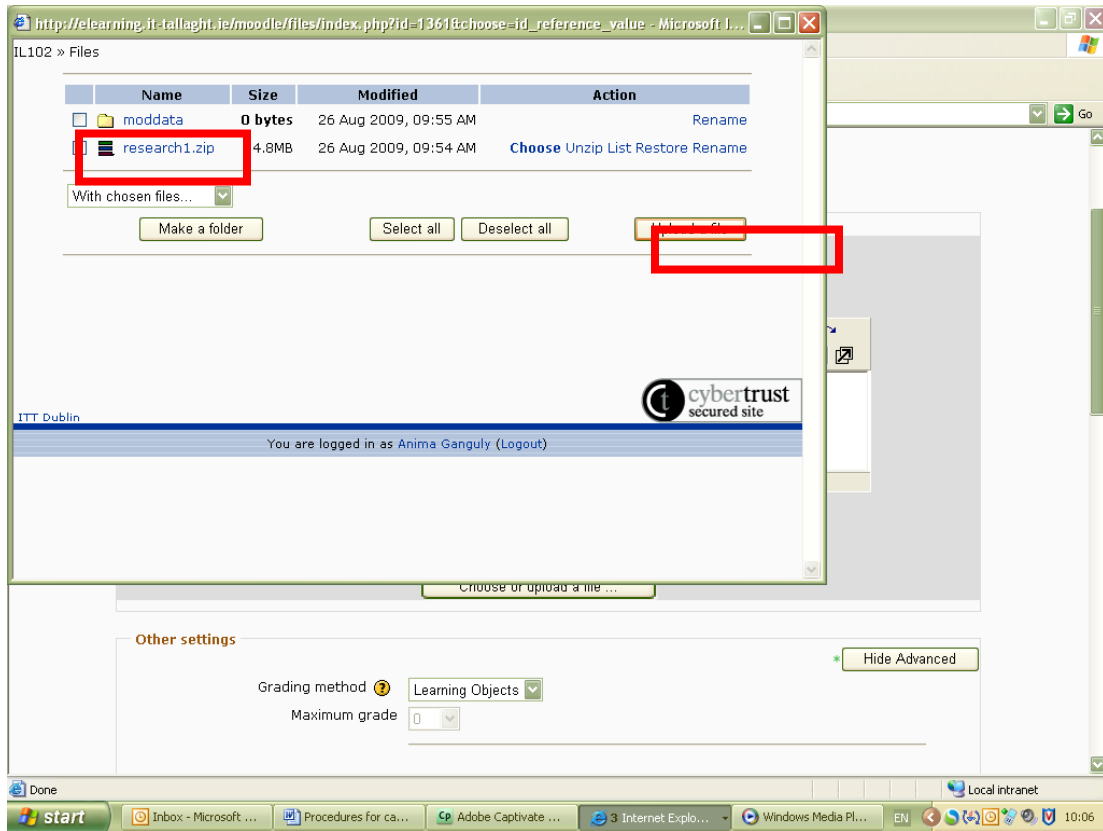
4. From the 'Add an activity' drop-down list, select 'SCORM/AICCs'.



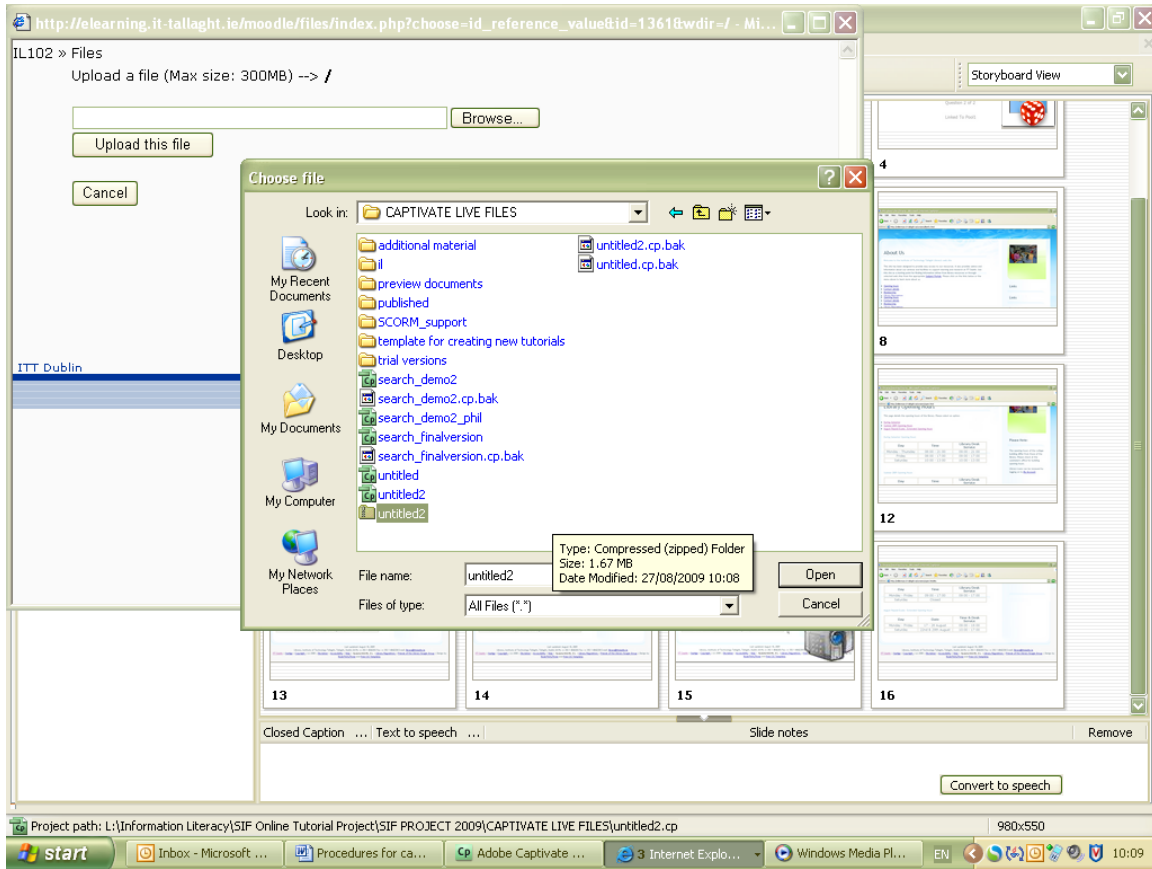
5. Type a name for the SCORM tutorial (e.g. 'How to Reference your Sources').
6. Type a short summary for the SCORM tutorial to give students an indication of what the tutorial is about (e.g. In this tutorial you will learn...').
7. In the **Package file** field click **Choose or upload a file**.



6. Click *Upload a file*.

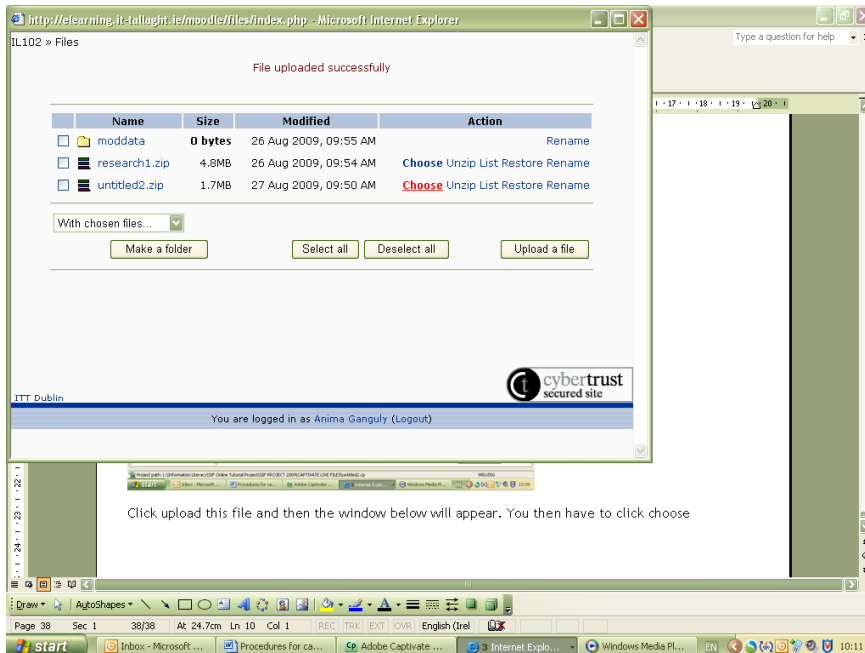


7. Click **Browse** to navigate to where you have saved the SCORM tutorial (Zip file) and click **Open**.



8. Click **Upload this file** and then the window below will appear.

9. Click **Choose** to select the zip file.



Click upload this file and then the window below will appear. You then have to click choose

10. Change the other SCORM settings, as follows:

- a. **Grading method:** Highest grade
- b. **Maximum grade:** 100
- c. **Number of attempts:** 1 attempt
- d. **Width:** 100%
- e. **Stage height:** 650
- f. **Display package:** New window (and allow the window to be resized)
- g. **Student skip content structure page:** Always
- h. **Disable preview mode:** Yes

Leave other values as default values.

11. Click **Save and return to course**.

Your tutorial is now ready to launch by students. Students scores can be tracked in the Moodle gradebook.

Contact Information

For help with adding SCORM tutorials to Moodle, contact Margaret Phelan in the Centre for Learning and Teaching (CeLT)

Email: celt@ittdublin.ie